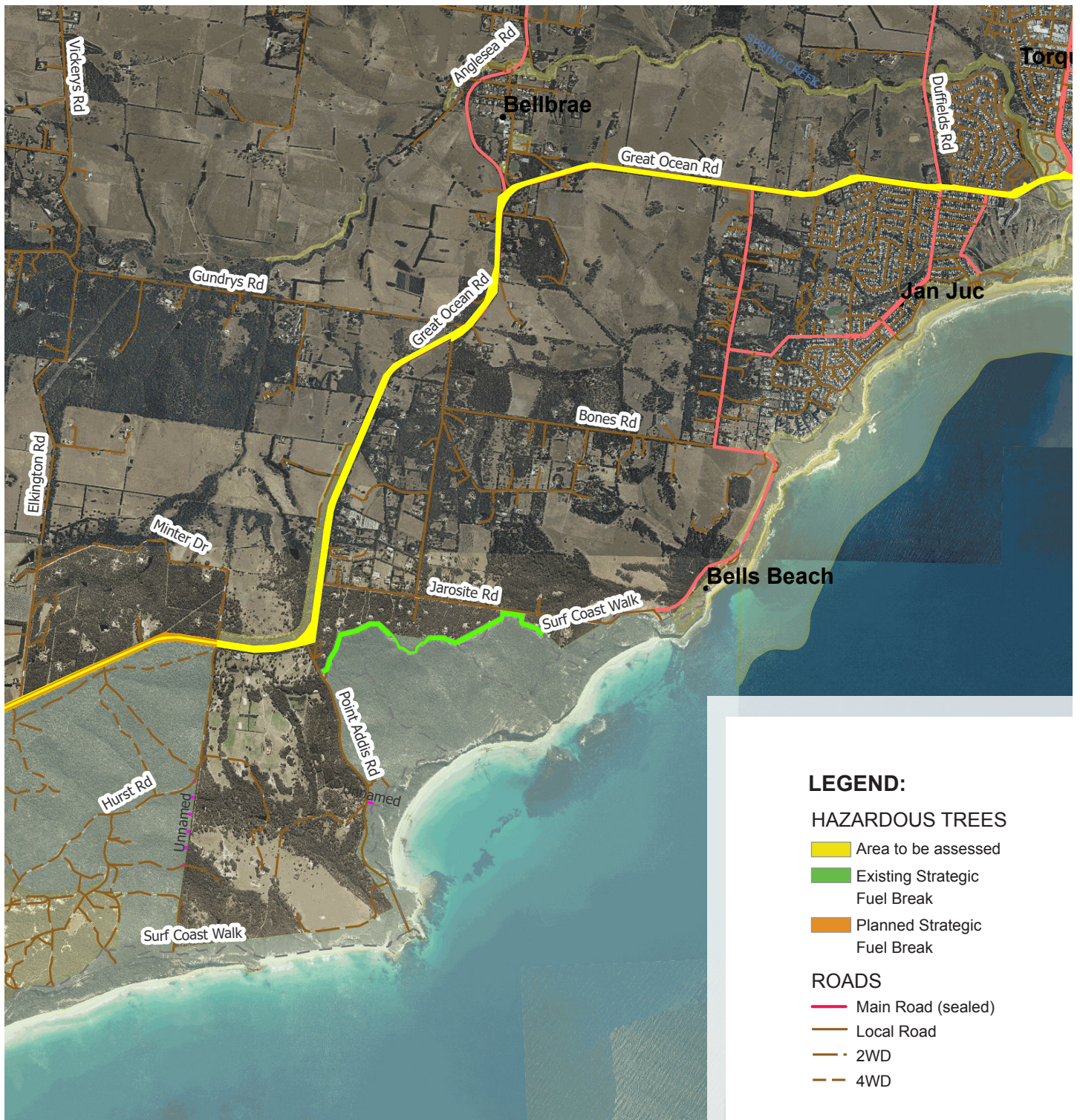


OUR AIM: Working together to reduce bushfire risk in Surf Coast Shire through the identification and removal of Hazardous Roadside Trees




THIS WILL:

-  Protect communities by improving safety and reducing the risk of accidents from fallen trees
-  Improve response times for emergency services during and after fire
-  Improves community resilience and supports faster reinstatement of essential services, power, water etc following bushfire
-  Improve access and recovery on both public and private land







LEGEND:

HAZARDOUS TREES

-  Area to be assessed
-  Existing Strategic Fuel Break
-  Planned Strategic Fuel Break

ROADS

-  Main Road (sealed)
-  Local Road
-  2WD
-  4WD



Fire affected trees can fall and block roads impacting the ability of community to leave and emergency services to respond



Why are trees a greater risk following fire?

- Fire weakens the structural integrity of trees resulting in them either falling or being susceptible to future failure.
- When adjacent to roadsides, hazardous trees are a serious issue and can hinder community safety and access for emergency services.
- In Victoria, tree strike is a leading cause of firefighter injury.

Managing hazardous trees prior to bushfire will not fully eliminate the risk, but rather quicken response times for recovery.

The Assessment Process

- Hazardous tree assessments examine the risks and likelihood of trees dropping limbs or totally failing.
- Assessments will include trees on public and private land within one tree length from roadsides.
- Trees will be assessed by qualified tree risk assessors who will mark trees with a yellow X for removal.

A critical part of the process is to meet legislative requirements and minimise impacts on cultural heritage and environmental values.

More information:

Forest Fire Management Victoria and Regional Roads Victoria are working in partnership with Surf Coast Shire, Parks Victoria and CFA as a *Safer Together* program to reduce bushfire risk. Please contact the Project Officers Chris Schneider email: chris.schneider@delwp.vic.gov.au mobile: 0409 453 429 or Jenny Howell email: Jenny.Howell@delwp.vic.gov.au ph: (03) 5233 5511

