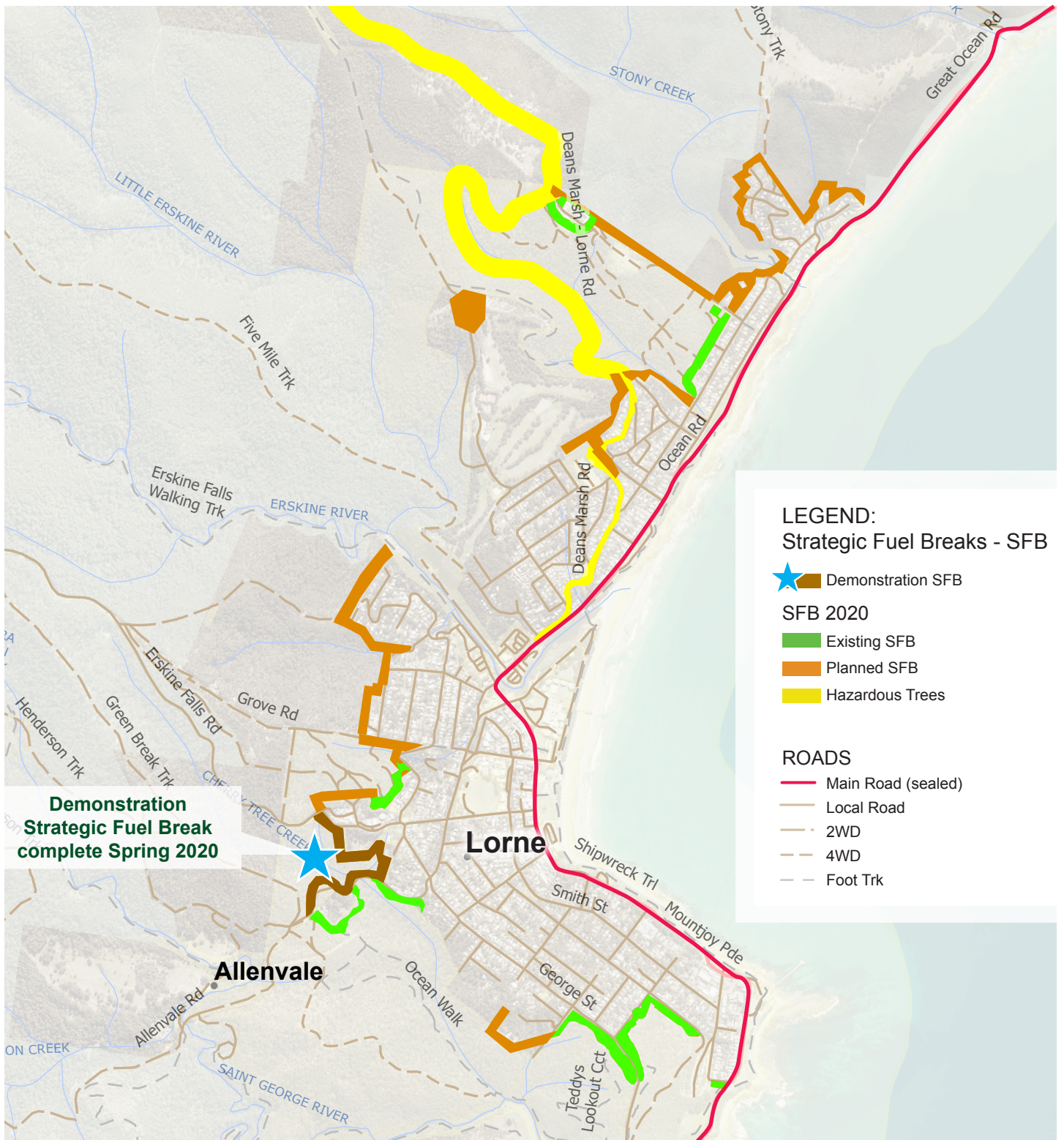
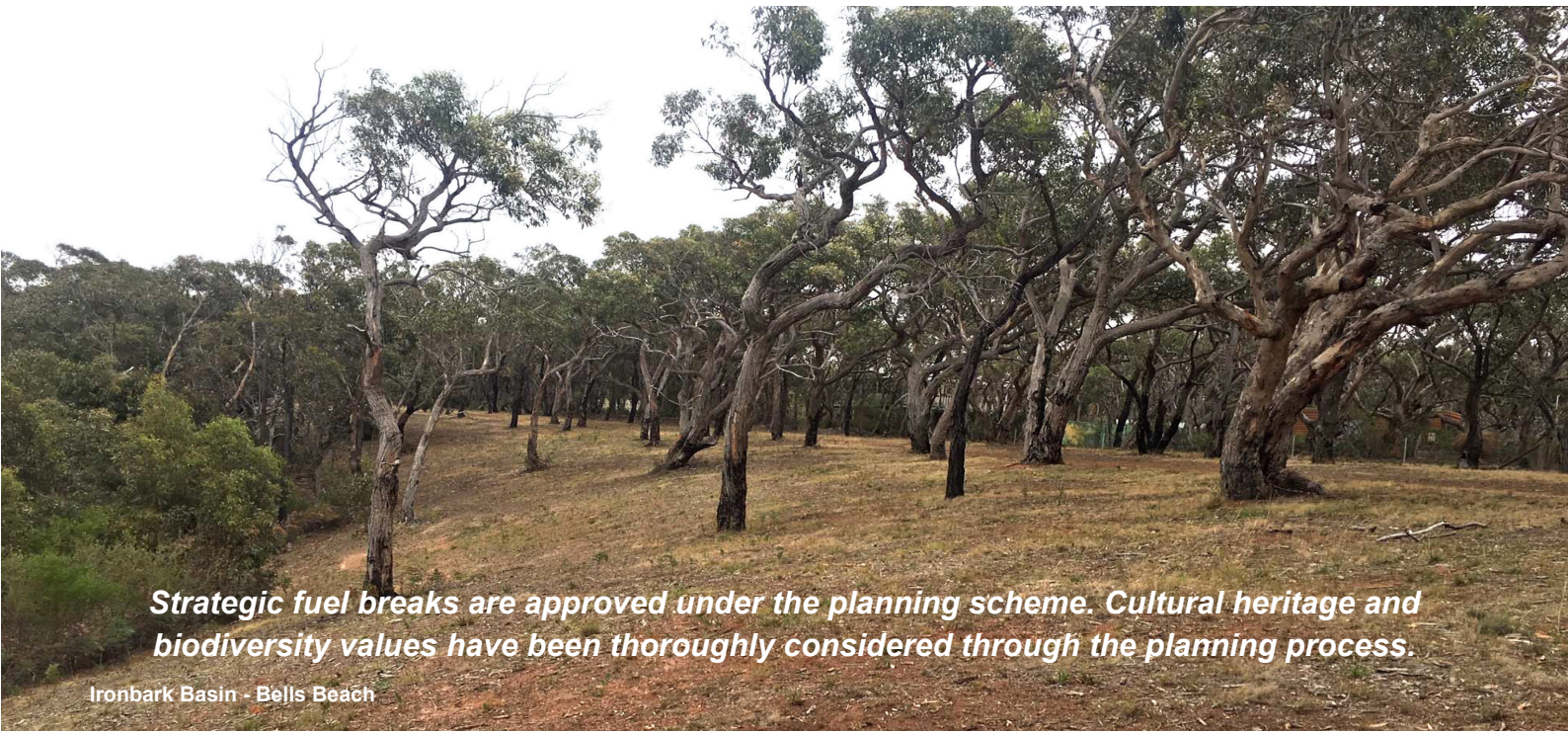


OUR AIM: Working together we will create Strategic Fuel Breaks to help protect high bushfire risk townships from Anglesea to Lorne

THESE BREAKS WILL:

-  **Protect communities by significantly reducing fuel loads close to towns and key assets**
-  **Complement fuel reduction actions by residents through mechanical removal of vegetation on public and private land**
-  **Support planned burning and improve safety and access for firefighters during bushfires**
-  **Improve visibility, safety and manage hazardous trees along key roads**





Strategic fuel breaks are approved under the planning scheme. Cultural heritage and biodiversity values have been thoroughly considered through the planning process.

Ironbark Basin - Bells Beach



Strategic Fuel Breaks are:

- An area up to 40 metres wide where the vegetation is reduced by mechanical removal
- Similar to a grassy woodland
- Maintained by mowing 1-2 times a year

Strategic Fuel Breaks on private property are being constructed to complement and complete existing ones on public land around our high risk towns.

Strategic Fuel Breaks provide:

- A break between urban fuels (for example houses, gardens and other flammable materials) and forest fuels— reducing the effects of radiant heat and embers.
- An effective boundary to support strategic planned burns and/or backburning operations during a bushfire.
- A safer environment for firefighters by reducing radiant heat, improving access and egress and the identification and removal of hazardous trees on key roadsides.

To be effective, Strategic Fuel Breaks and Planned Burns need to be complemented by vegetation and urban fuel reduction within townships.

More information:

Forest Fire Management Victoria and Regional Roads Victoria are working in partnership with Surf Coast Shire, Parks Victoria and CFA as a *Safer Together* program to reduce bushfire risk. Please contact the Project Officers Chris Schneider email: chris.schneider@delwp.vic.gov.au mobile: 0409 453 429 or Jenny Howell email: Jenny.Howell@delwp.vic.gov.au ph: (03) 5233 5511

